

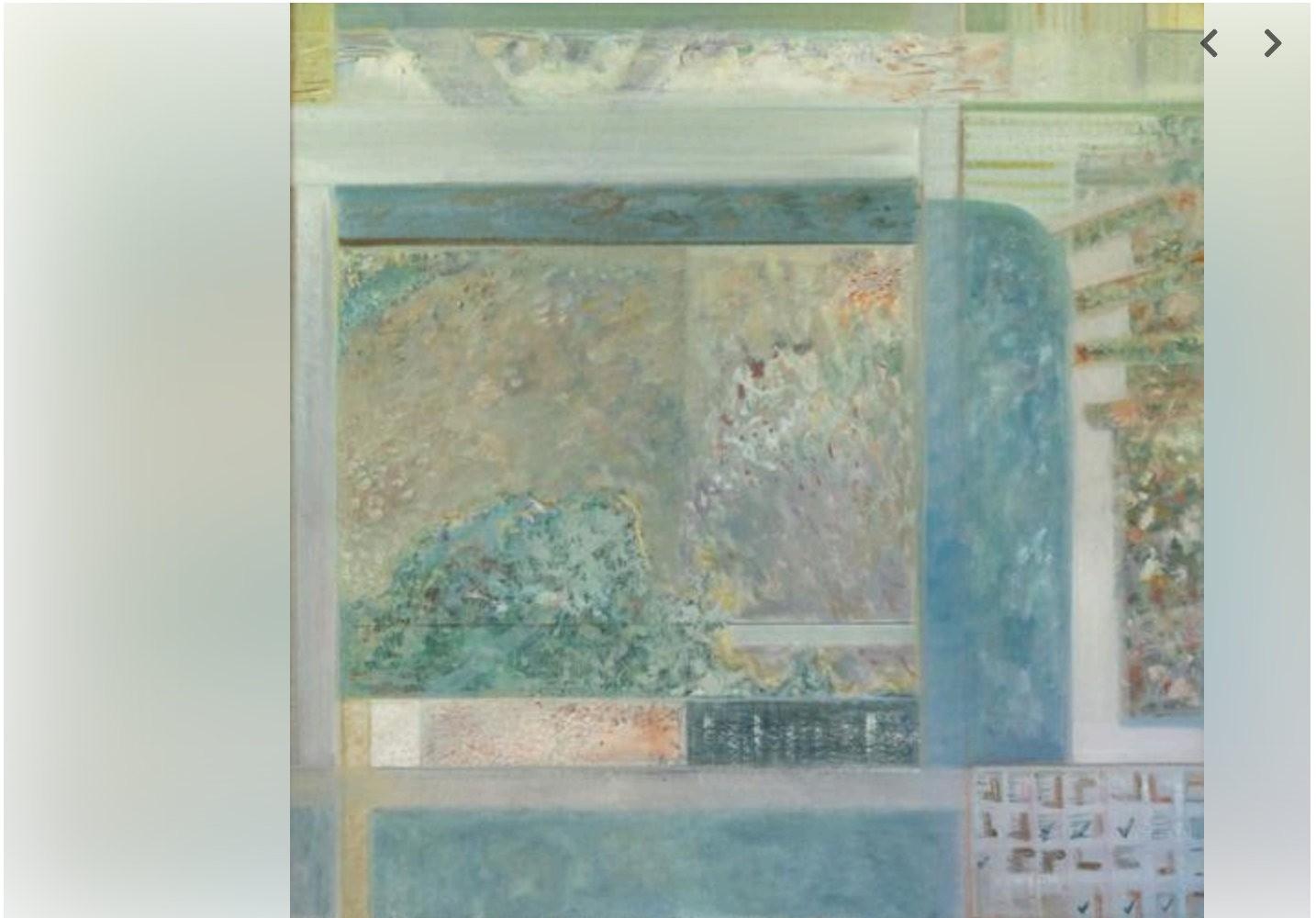
Bucks Nonprofits

[https://www.buckscountyherald.com/arts-entertainment/art-galleries/three-exhibitions-set-to-open-at-hunterdon-art-museum/article\\_7c036e30-0bf6-4173-9915-b8c719154185.html](https://www.buckscountyherald.com/arts-entertainment/art-galleries/three-exhibitions-set-to-open-at-hunterdon-art-museum/article_7c036e30-0bf6-4173-9915-b8c719154185.html)

## Three exhibitions set to open at Hunterdon Art Museum

Wednesday, May 13, 2026 9:56 am

1 of 3



**“In and Out the Window” (Maps + Games series), oil and perlite on Homasote by Bascha Mon.**

Courtesy of the artist and Tappetto Volante Projects, Brooklyn, N.Y.

Hunterdon Art Museum hosts an opening reception from 2-4 p.m. Sunday, May 17, for three new exhibitions.

They include:

- A solo exhibition of Emily Strong, a figurative painter making larger-than-life realist oil paintings depicting the human body, May 17-July 5.

- “Claybash,” the second triennial juried exhibition of ceramics, which invites artists to explore the possibilities of the medium by using clay as both material and idea, May 17-July 5.
- Bascha Mon’s “Mindscapes,” celebrating 60 years of artistic vision, May 17-Sept. 6.

Strong’s work is meticulously painted to show great detail, yet the images are cropped, giving the paintings and her subjects a disorienting quality. This approach also strikes a balance between abstraction and realism. The paintings depict intimate scenarios that explore themes of cultural identity, gender, isolation, existence and the complexities of human relationships.

Strong’s process includes the use of photographic images to document models in various staged poses. This documentation is then followed by extensive and detailed interviews with each model, enabling Strong to become more deeply engaged with her subjects. These interviews are then transcribed and become the written information included in the QR Codes that accompany each painting. These narrations provide additional layers of meaning and understanding of her work.

“Claybash” is juried by Angelik Vizcarrondo-Laboy, a New York-based curator and writer of contemporary art and craft. Vizcarrondo-Laboy selected 40 artists from a pool of regional, national, and International artists. Cash prizes will be awarded at the opening reception for First Prize and Second Prize. Three artists will be selected for Honorable Mentions.

For more than 60 years, Mon has made art using a variety of materials and techniques while maintaining her unique artistic vision. The New Jersey-based artist, who is 93, has consistently relied on her own imagination for imagery and on color to convey her thoughts and emotions. For this exhibition, curator Mary Birmingham has selected works created in the 1970s, juxtaposed with a selection of Mon’s recent works on paper.

Mon’s early paintings reflect places from her past, while her more recent works respond more directly to her present reality. The thread that ties these two seemingly disparate bodies of work together is that they both find their sources in Mon’s unconscious mind – an idea that has driven her entire career. In her work we see the artist mapping her memories and emotions, creating metaphorical landscapes of the imagination, or “mindscapes.”

For roughly the past decade, Bascha Mon's process has been deeply connected to the music of the French composer, Olivier Messiaen. Alone in her studio, Mon listens to his compositions as she applies color to the paper, responding to his dynamics, rhythms, and changes in tempo. While the imagery may originate in her own mind, she is spontaneously guided by the music.

She explains, "Most of the time, with no initial image in mind, I stand with my hands over the paper until I feel something coming through the music...I have no idea what will appear on the paper until it is there." The works are completed in single sessions of three to six hours. The titles and dates provide clues as to what might have been happening on a particular day, reflecting either Mon's internal state of mind or the world around her.

The museum, located at 7 Lower Center St., Clinton, N.J., is open Wednesday through Sunday, from 11 a.m. to 5 p.m. Visit [www.hunterdonartmuseum.org](http://www.hunterdonartmuseum.org) or call 908-735-8415 for information.

Learn more about your privacy options