

## C A L E N D A R

<b>August 9, 2010</b>	Deadline for submissions
<b>September 1, 2010</b>	Artists notified
<b>September 8-10, 2010</b>	Delivery of accepted work Wednesday, Thursday, Friday, 10am – 2pm
<b>October 3, 2010</b>	Opening reception 2 - 4 pm, Sunday
<b>January 9, 2011</b>	Exhibition closes
<b>January 12-14, 2011</b>	Pick-up work 10 am - 2 pm, Tuesday - Friday

**MEMBERSHIP** is a vital source of the Hunterdon Art Museum's revenue, making education programs and exhibitions possible.

CATEGORY	ANNUAL FEE
Senior (65 +)	\$ 35
Student (w/ college ID)	\$ 35
Individual ( over 18)	\$ 45
Family	\$ 65
Contributor	\$ 100
Sponsor	\$ 250
Patron	\$ 500
Benefactor	\$ 1000
Business/Corporate	Please Inquire

Call the office at 908.735.8415 or check our website at [hunterdonartmuseum.org](http://hunterdonartmuseum.org) for information about the many benefits of membership.

# Hunterdon Art Museum

## 2010 Members Exhibition

### Juror

This year's juror is Jeanne Brasile, Director of the Walsh Gallery at Seton Hall University in South Orange, New Jersey. Jeanne earned a Bachelor's Degree in studio art and art history at Ramapo College of New Jersey, and a Master's Degree in Museum Studies at Seton Hall University. During her career of nearly twenty years she has curated numerous shows and has worked for such institutions as The Storm King Art Center, The South Street Seaport Museum and The Montclair State University Art Galleries. Philosophically, Jeanne sees the gallery as a place for asking questions rather than a framework for imposing meaning. She is most interested in developing exhibitions that challenge visitors to re-think their perceptions about art, art-making and the role of the museum/gallery.

### Eligibility

All members of the Hunterdon Art Museum are invited to submit up to five images of work completed in the last five years, and not previously exhibited at the Museum. Two-dimensional work must not exceed 84 inches in height or width, including frames. Three-dimensional work may not weigh more than 75 pounds, or measure more than 84 inches in height or 38 inches in width or depth.

### Entry Fee

A non-refundable fee of \$35 is required of all participants. Entry fees are necessary to cover the cost of organizing the exhibition. Please make your check payable to Hunterdon Art Museum, and send with the completed application form.

### Requirements

To enter, complete the downloaded entry form and mail it, along with the entry fee and images of your artwork(s) on a CD. Images should be in JPEG format, no larger than 300 dpi at approximately 4 x 6 inches. All CDs must be PC compatible. Each image should be labeled with your last name and the title of the work (e.g.: Monet, Water Lilies.) Please label your CD with your name, email address and telephone number. Entries must be received by August 9, 2010. CDs will not be returned. Please do not include additional information such as bios, resumes, artist statements, etc. with your submission.

### Selection and Prizes

The Museum will notify artists of the juror's selections on September 1, 2010 by email. A list of accepted artists will also be posted on the HAM website. There will be one juror's prize awarded. Additionally, the Museum will select one artist as the recipient of a River Gallery solo show to be held during next year's Members Exhibition.

### Sales and Reproduction

The Hunterdon Art Museum reserves the right to reproduce any work accepted for the exhibition for use in publicity materials. A commission of 50% will be charged on all sales.

### Delivery and Return

All work must be hand-delivered, in ready-to-exhibit condition to the Museum, by dates outlined in the calendar. All work will be fully insured while at the Museum. Artists are responsible for insurance during transport to and from the Museum.

### NOTE:

The Museum will produce an electronic announcement card for the exhibition. Artists who wish to produce individual announcement cards may do so at their own expense; however, any such cards must be clearly identified as a product of the artist, not the Museum.

# 10

**ENTRY FORM:** Please complete and mail with images and entry fee to:

Hunterdon **Art** Museum  
7 Lower Center Street, Clinton, NJ 08809

Name \_\_\_\_\_

Address \_\_\_\_\_

Phone \_\_\_\_\_

Email \_\_\_\_\_

Entry fee of \$35 enclosed  Membership fee enclosed

Member Category \_\_\_\_\_

**CD IMAGE #1** ACCEPTED

Title \_\_\_\_\_

Medium \_\_\_\_\_

Year \_\_\_\_\_ Price \_\_\_\_\_

H" x W" \_\_\_\_\_

**CD IMAGE #2** ACCEPTED

Title \_\_\_\_\_

Medium \_\_\_\_\_

Year \_\_\_\_\_ Price \_\_\_\_\_

H" x W" \_\_\_\_\_

**CD IMAGE #3** ACCEPTED

Title \_\_\_\_\_

Medium \_\_\_\_\_

Year \_\_\_\_\_ Price \_\_\_\_\_

H" x W" \_\_\_\_\_

**CD IMAGE #4** ACCEPTED

Title \_\_\_\_\_

Medium \_\_\_\_\_

Year \_\_\_\_\_ Price \_\_\_\_\_

H" x W" \_\_\_\_\_

**CD IMAGE #5** ACCEPTED

Title \_\_\_\_\_

Medium \_\_\_\_\_

Year \_\_\_\_\_ Price \_\_\_\_\_

H" x W" \_\_\_\_\_

Hunterdon **Art** Museum  
center for art, craft & design

7 Lower Center Street Clinton, NJ 08809

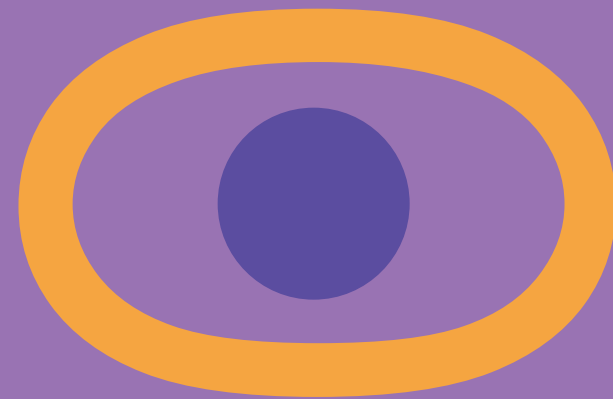
**T** 908.735.8415 **F** 908.735.8416

[hunterdonartmuseum.org](http://hunterdonartmuseum.org)

Office hours: Tues.-Fri., 9-5

Gallery hours Tues.-Sun., 11-5

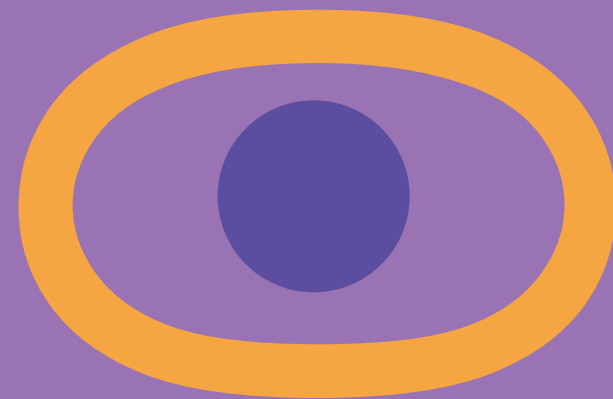
The Museum's programs are made possible in part by funds from the New Jersey State Council on the Arts/Department of State, a Partner Agency of the National Endowment for the Arts, the NJ Cultural Trust, the Geraldine R. Dodge Foundation, and corporations, foundations, and individuals. The Hunterdon Art Museum is a wheelchair accessible space. Publications are available in large print. Patrons who are deaf, hard of hearing or speech impaired may contact the Museum through the New Jersey Relay Service at (TTY) 1 (800) 852-7899



**M E M B E R S**



**EXHIBITION**



prospectus call for entries  
oct 3, 2010 - jan 9 | 2011